

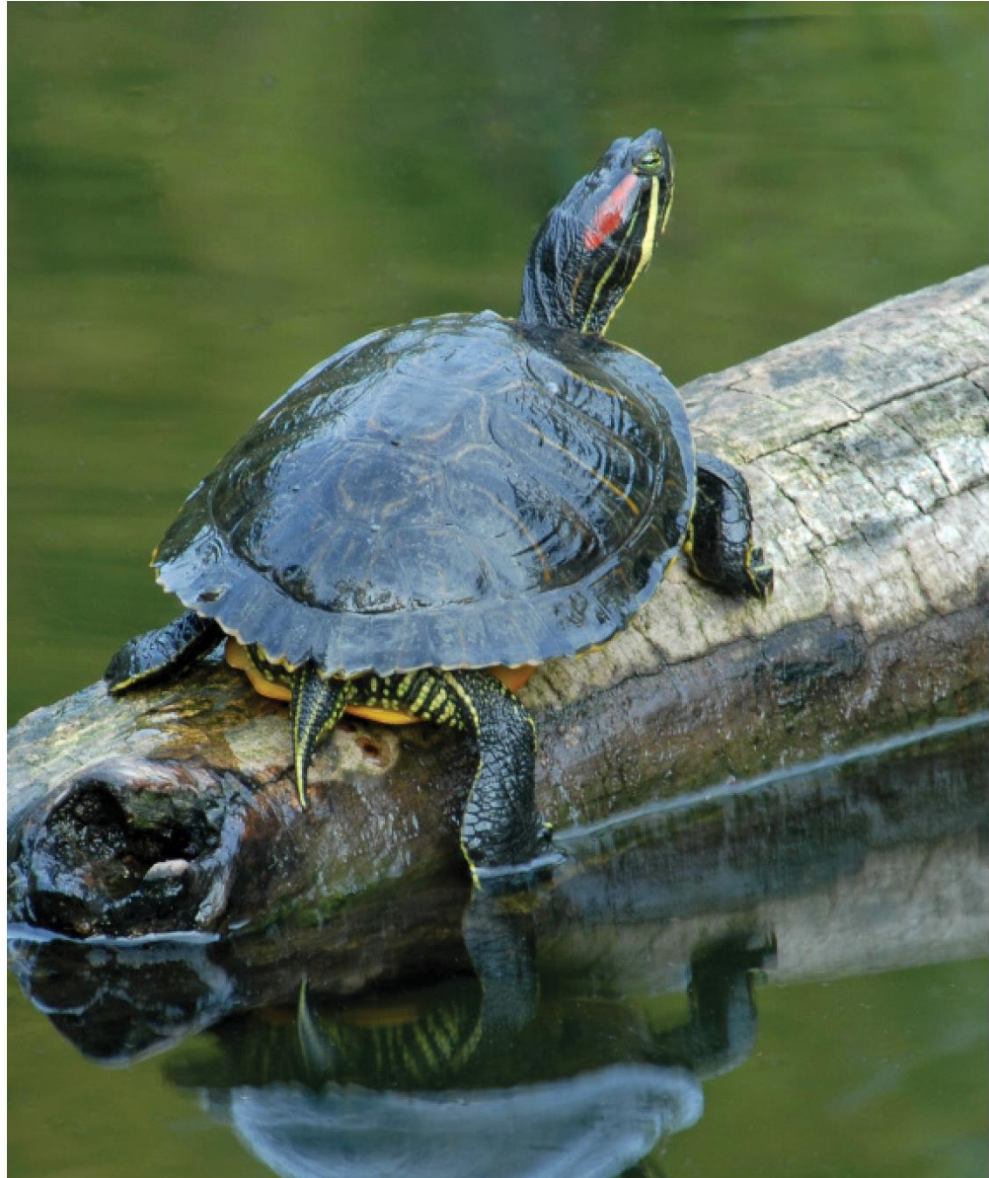
# Community Park at the Recreation Center

Advisory Committee Meeting

March 5, 2019



## SITE SUMMARY: ENHANCED HABITAT AND SPECIES GUILDS



The site is designed to provide enhanced habitat and interactive experience.

IMAGES CLOCKWISE FROM LEFT: Red-eared Slider, [www.virginiaherpetologicalsociety.com](http://www.virginiaherpetologicalsociety.com), John White; Mining bee, [davidsuzuki.org/queen-of-green/how-to-grow-a-wild-bee-sanctuary](http://davidsuzuki.org/queen-of-green/how-to-grow-a-wild-bee-sanctuary); A southern leopard frog at the Middle Fork River Forest Preserve, photo by Rob Kanter, <http://illinoisdoves.org>, Photo by V. Berardi; Hermit Thrush, [www.audubon.org](http://www.audubon.org), Photo: Brian E. Small/VIREO.

## SITE SUMMARY: MATERIALS USAGE

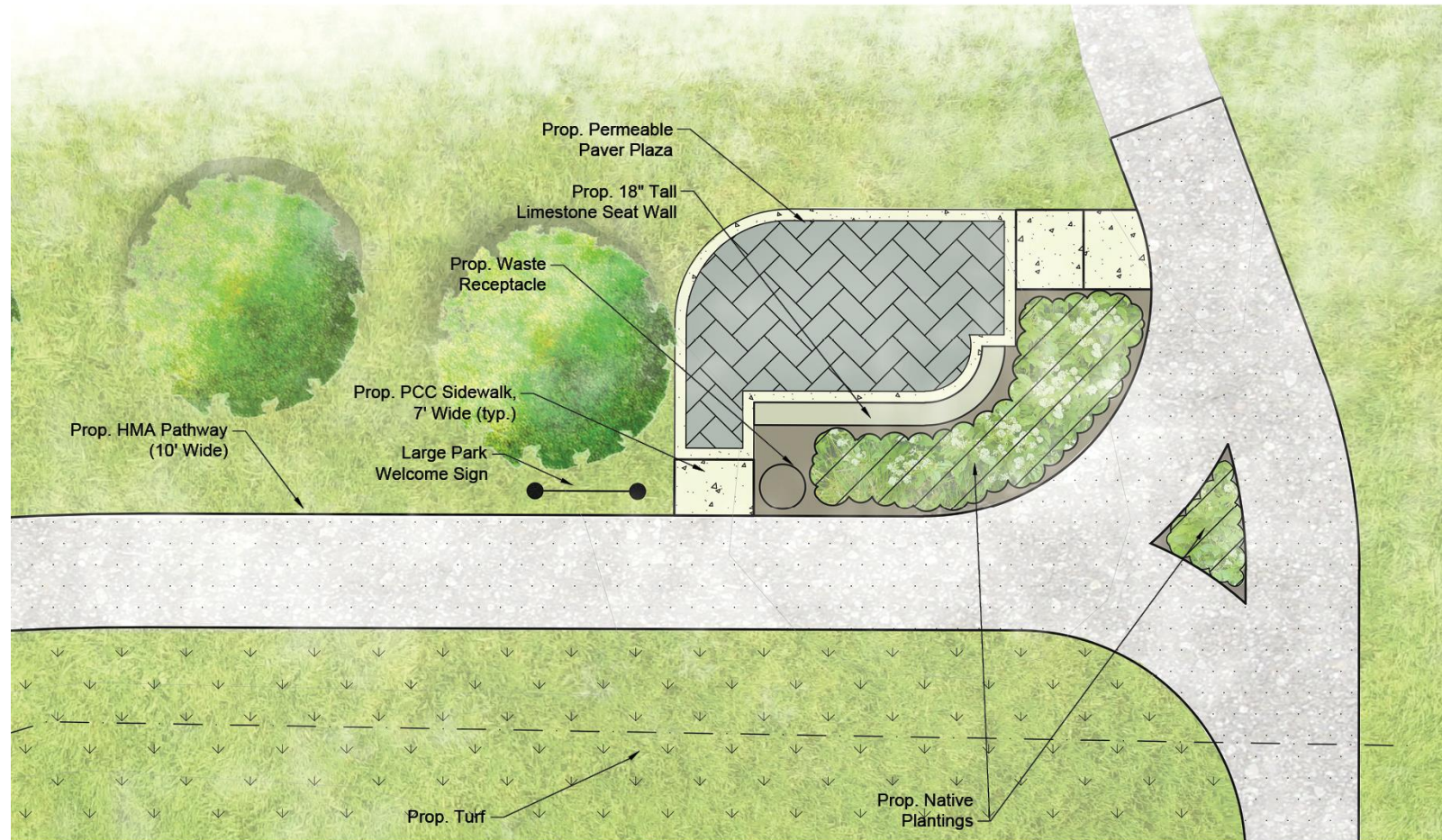


*MATERIALS FROM LEFT: Permeable pavers, Concrete, Decomposed Granite, Asphalt, Native plantings, Limestone, Site-harvested Ash logs, Lumber and mesh screen, Site-harvested sand, Wood picnic tables.*

The project utilizes existing materials and features such as sand traps, ash trees, berms and cart paths. Materials brought to the site were chosen to fit a more sustainable footprint.



## ACTIVITY ZONE: ENTRY PLAZA AND OVERLOOK



Entry Plaza offers a place to gather and seating overlook.

## ACTIVITY ZONE: ENTRY PLAZA AND OVERLOOK



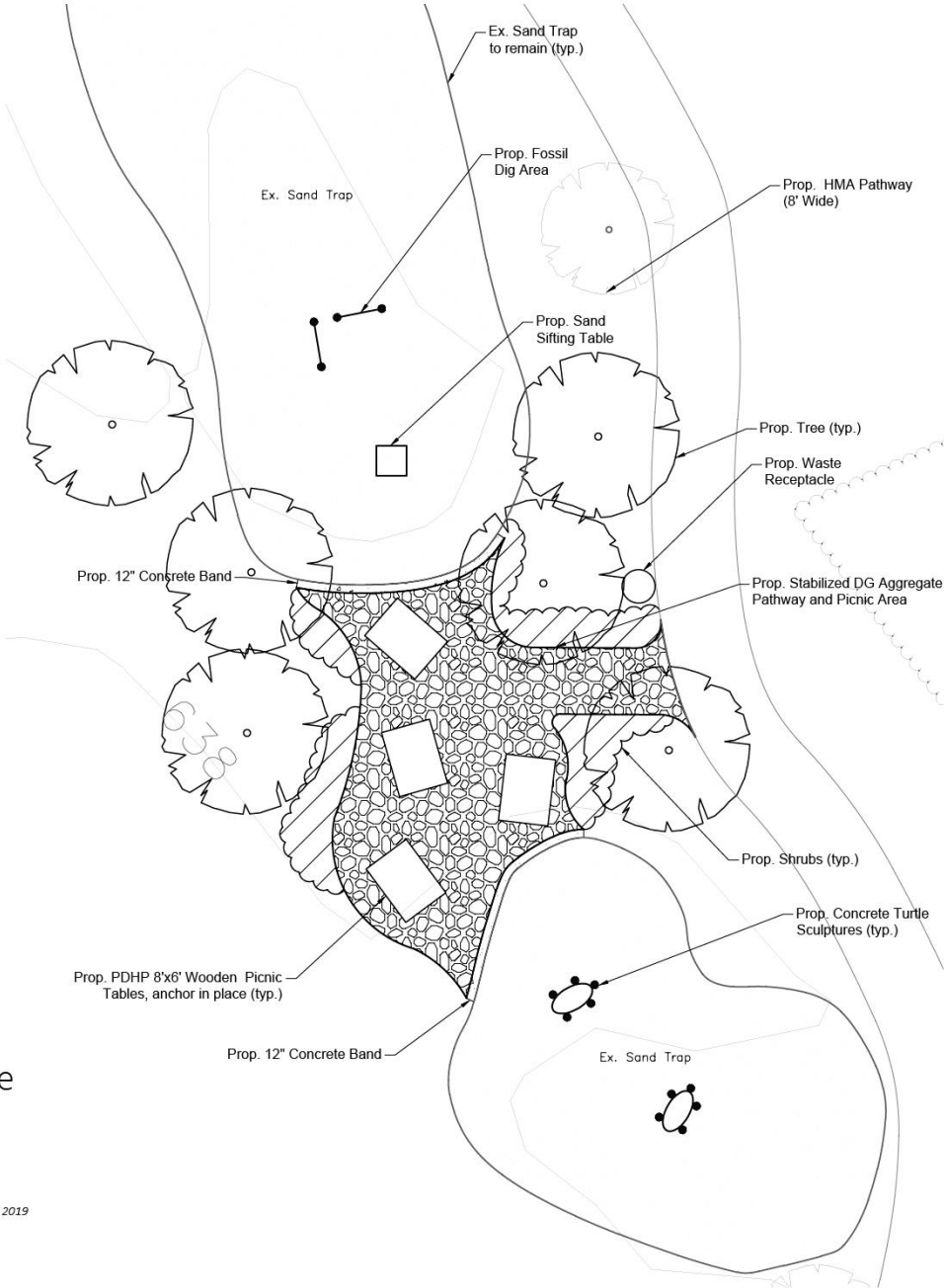
Welcome signage shows Park features and pathway access.



ACTIVITY ZONE: SAND PLAY PICNIC AREA



Existing sand traps are connected by accessible picnic area.



## ACTIVITY ZONE: BERMS AND CLIMBING



Site topography is enhanced with log steppers and balance features.



## *FAMILY ZONE:* NORTH POND OVERLOOK



Fresh water tidepools and observation deck allow visitors to take in the site.



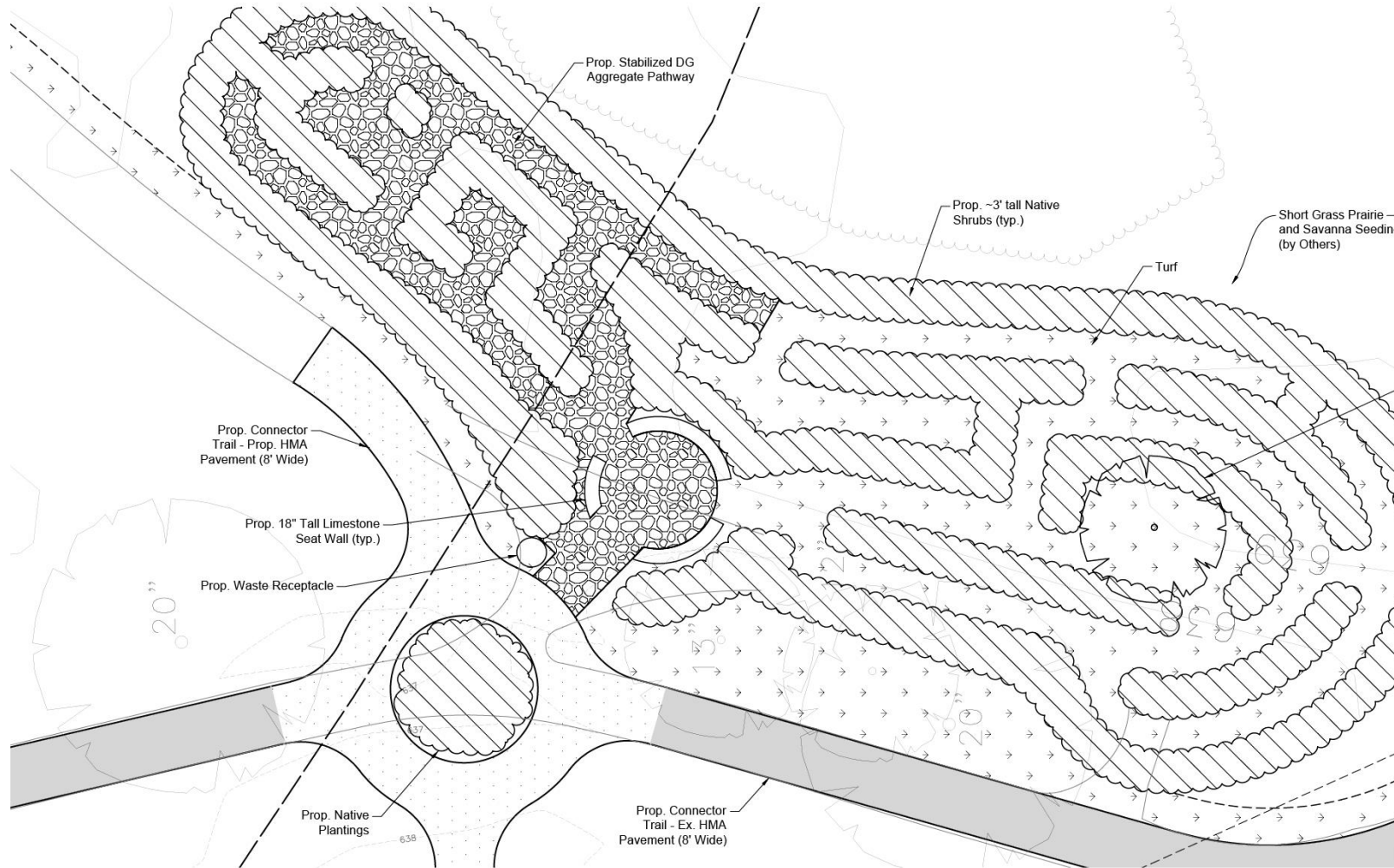
## FAMILY ZONE: EXPLORATION GARDEN



Apple trees surrounded by bee berms, hollow stem native shrubs and flowering plants offer the perfect setting to learn about pollination and dependence for food production.



## FAMILY ZONE: COUNCIL RING AND NATURE MAZE



Accessible pathways wind through the north portion of the Nature Maze; stone seating Council Ring marks the entrance of this feature.

## FAMILY ZONE: COUNCIL RING AND NATURE MAZE



Rows of native shrubs offer the perfect setting for play, and early flowering and late fruiting plants act as fueling station for migratory birds.



## QUIET/HABITAT ZONE: NORTH POND SEATING



Curved stone seating is nested into an existing berm for a quiet gathering and observation area.



## QUIET/HABITAT ZONE: TURTLE MEADOW



Valuable turtle nesting habitat is created with re-purposed bunker sand; turtle crossing signs alert human visitors to the terrestrial stage of this reptilian guild.

## QUIET/HABITAT ZONE: SKOKIE RIVER WOODS VISTA OVERLOOK



Ride your bike or walk to  
the Skokie River Woods  
wetland overlook.



